



Gridd[®]

ADAPTIVE CABLING DISTRIBUTION SYSTEM

Product Catalog

Components and Layout Planning



Standard Components

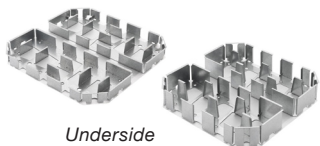
-The foundation of the Gridd System for both Gridd40 (1.6" high) & Gridd70 (2.75" high).

Base Unit

14.6" x 14.6" (370mm x 370mm)

FA-4001 1.6" (40mm)

FA-7001 2.75" (70mm)



Undersheet

3.5' x 900' (1m x 274m)

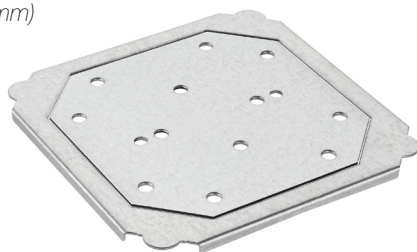
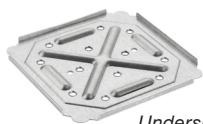
FA-4096 (Universal)



Corner Plate

7.8" x 7.8" (198mm x 198mm)

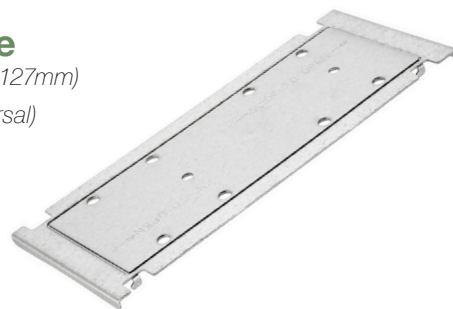
FA-4002 (Universal)



Channel Plate

11.7" x 5" (298mm x 127mm)

FA-4003 (Universal)



Half Base Unit

7.3" x 14.6" (185mm x 370mm)

FA-4101 1.6" (40mm)

FA-7101 2.75" (70mm)



Half Channel

5.9" x 5" (149mm x 127mm)

FA-4102 (Universal)

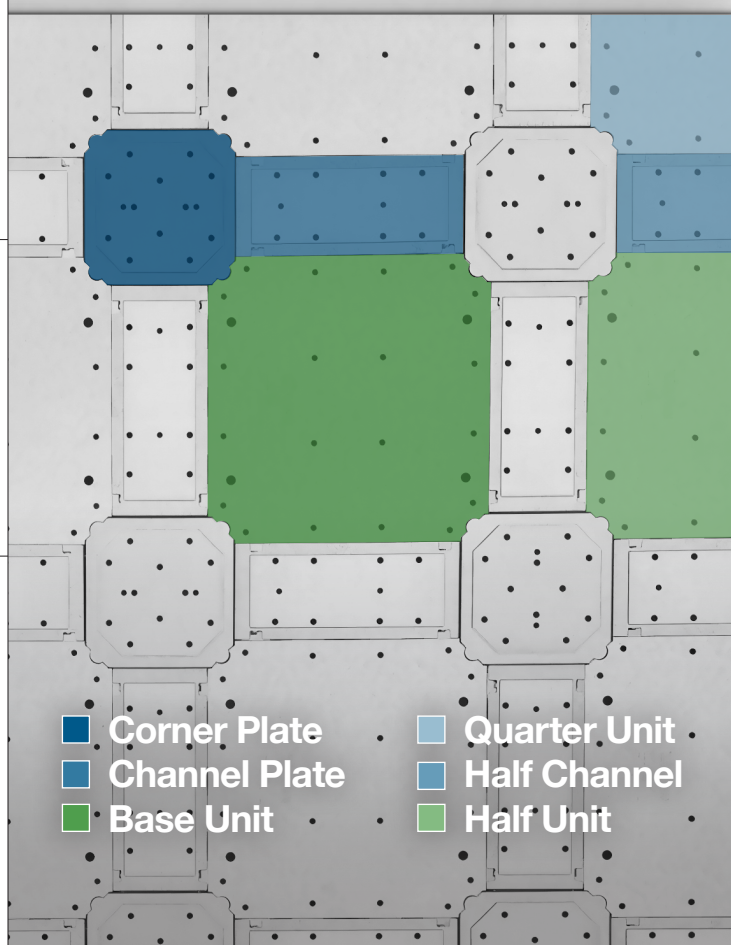


Quarter Base Unit

7.3" x 7.3" (185mm x 185mm)

FA-4108 1.6" (40mm)

FA-7108 2.75" (70mm)



- Corner Plate
- Channel Plate
- Base Unit
- Quarter Unit
- Half Channel
- Half Unit

Border Components

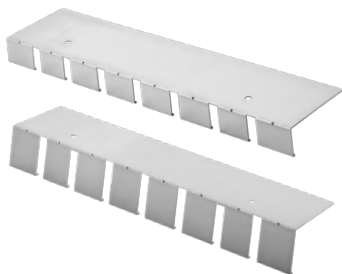
—Additional elements for closing gaps between Standard Components and boundaries.

End Cover

20" x 4.5" (500mm x 115mm)

FA-4104 1.6" (40mm)

FA-7104 2.75" (70mm)

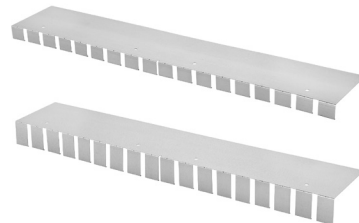


End Cover Long

39.6" x 7" (1005mm x 180mm)

FA-4104L 1.6" (40mm)

FA-7104L 2.75" (70mm)

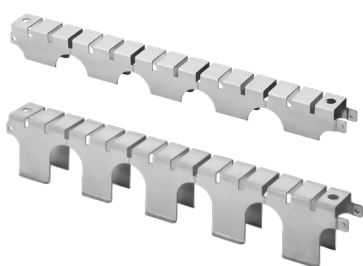


Reinforcing Band

1.1" x 14.6" (28mm x 370mm)

FA-4105 1.5" (38mm)

FA-7105 2.68" (68mm)

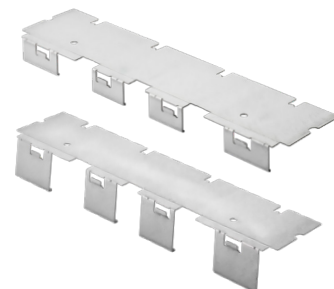


L-Border

20" x 4.5" (500mm x 115mm)

FA-4103 1.6" (40mm)

FA-7103 2.75" (70mm)



Trapezoid Plate

1.4" x 8" (35mm x 200mm)

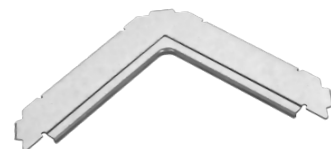
FA-4106 (Universal)



L-Trapezoid Plate

8" x 8" (200mm x 200mm)

FA-4107 (Universal)



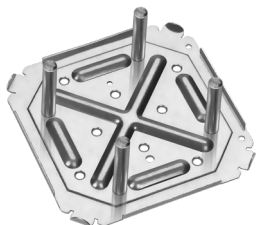
Reinforced System - Corner and Channel plates are the only two reinforced elements, working seamlessly with standard base units.

Reinforced Corner Plate

7.8" x 7.8" (198mm x 198mm)

FA-4002R40 1.6" (40mm)

FA-4002R70 2.75" (70mm)



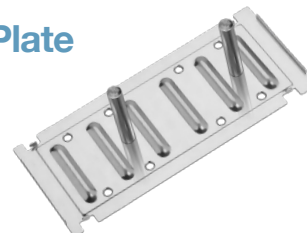
Underside of 70 shown

Reinforced Channel Plate

11.7" x 5" (298mm x 127mm)

FA-4003R40 1.6" (40mm)

FA-4003R70 2.75" (70mm)



Underside of 70 shown

Transition Ramp

– ADA compliant 1:12 slope to 1:50 slope

1:12 slope ramp for Gridd40

16" x 19" x 1.6" (406mm x 483mm x 40mm)

Straight

FA-4419 1.6" (40mm)



19" x 19" x 1.6" (483mm x 483mm x 40mm)

Internal Angle (Concave)

FA-4419in 1.6" (40mm)



19" x 19" x 1.6" (483mm x 483mm x 40mm)

External Angle (Convex)

FA-4419ex 1.6" (40mm)



1:12 slope ramp for Gridd70

16" x 33" x 2.75" (406mm x 840mm x 70mm)

Straight

FA-7433 2.75" (70mm)



33" x 33" x 2.75" (840mm x 840mm x 70mm)

Internal Angle (Concave)

FA-7433in 2.75" (70mm)



33" x 33" x 2.75" (840mm x 840mm x 70mm)

External Angle (Convex)

FA-7433ex 2.75" (70mm)



1:20 slope ramp for Gridd40

16" x 33" x 1.6" (406mm x 840mm x 40mm)

Straight

FA-4433 1.6" (40mm)



33" x 33" x 1.6" (840mm x 840mm x 40mm)

Internal Angle (Concave)

FA-4433in 1.6" (40mm)



33" x 33" x 1.6" (840mm x 840mm x 40mm)

External Angle (Convex)

FA-4433ex 1.6" (40mm)



1:20 slope ramp for Gridd70

16" x 55" x 2.75" (406mm x 1397mm x 70mm)

Straight

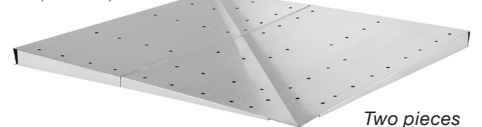
FA-7455 2.75" (70mm)



55" x 55" x 2.75" (1397mm x 1397mm x 70mm)

Internal Angle (Concave)

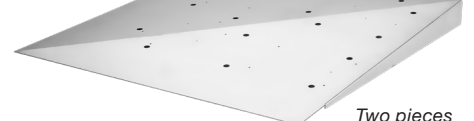
FA-7455in 2.75" (70mm)



55" x 55" x 2.75" (1397mm x 1397mm x 70mm)

External Angle (Convex)

FA-7455ex 2.75" (70mm)



TransitionFrames

– Stainless steel shown. Powder coating available.

Frame

1.2" x 95" (30mm x 2413mm)

FA-4206 1.9" (50mm)

FA-7206 3.15" (80mm)



Frame End Cap

FA-4209

FA-7209



Frame Anchor

FA-4205

FA-7205



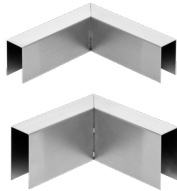
Frame Corner Short

(used at 90° corner)

6" x 6" (152mm x 152mm)

FA-4207 1.9" (50mm)

FA-7207 3.15" (80mm)



Frame Corner Long

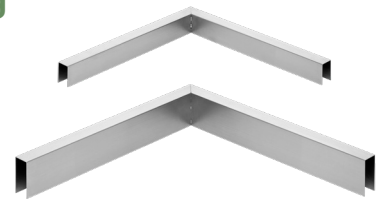
(used at 90° corner)

19" x 19" (482mm x 482mm)

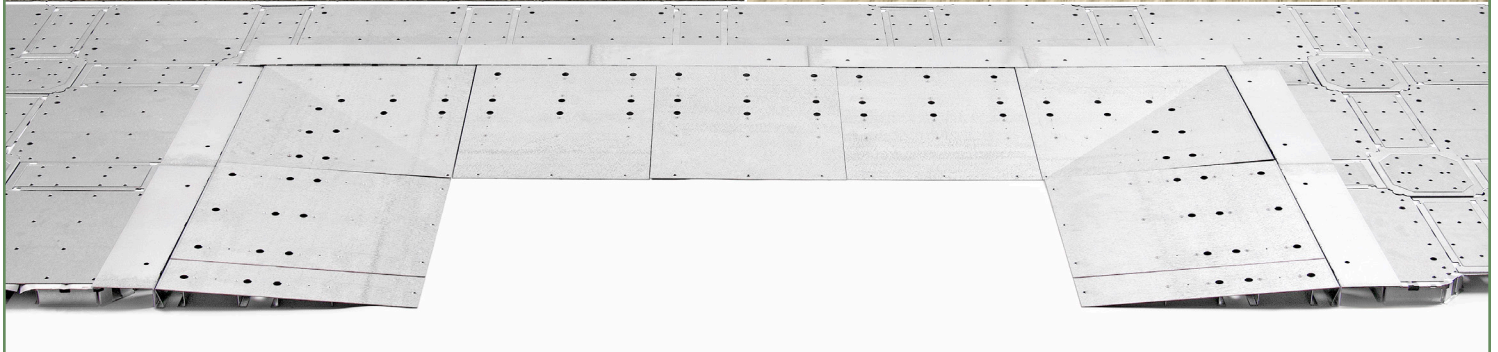
FA-4208 1.9" (50mm)

33" x 33" (840mm x 840mm)

FA-7208 3.15" (80mm)



Ramps & Frames



Power & Cable Integration

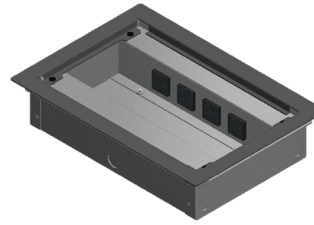
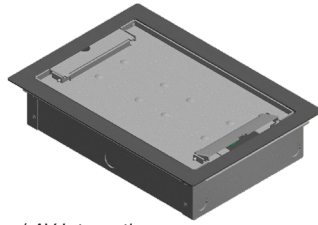
—Maximizing distribution channels.

Power/Voice/Data Box

11.5" x 9" (292mm x 229mm)

FA-4001-XXX 1.6" (40mm)

FA-7001-XXX 2.75" (70mm)



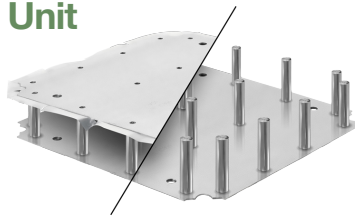
Options: Quantity of Receptacles, Low Voltage / AV Integration

High Capacity Base Unit

14.5" x 14.5" (370mm x 370mm)

FA-4230 1.6" (40mm)

FA-7230 2.75" (70mm)



FA-7230 shown

High Capacity Plates

44" x 24.3" (1118mm x 618mm)

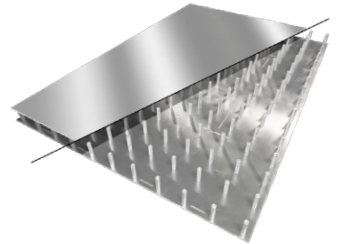
FA-4241 1.6" (40mm)

FA-7241 2.75" (70mm)

63.7" x 44" (1618mm x 1118mm)

FA-4240 1.6" (40mm)

FA-7240 2.75" (70mm)



FA-7240 shown

Cable Management Boots

Wall boots:

14.5" x 3.5" (368mm x 89mm)

FA-0400 1.6" (40mm)

FA-0700 2.75" (70mm)

24" x 8" (610mm x 203mm)

FA-0401 1.6" (40mm)

FA-0701 2.75" (70mm)



Ladder boot:

14.5" x 8.7" (668mm x 221mm)

FA-0405 1.6" (40mm)

FA-0705 2.75" (70mm)



FA-0706 shown

Outlet Cover

Full - 23.5" x 23.5" (595mm x 595mm)

FA-4220 1.6" (40mm)

FA-7220 2.75" (70mm)

Half - 23.5" x 11.7" (595mm x 295mm)

FA-4221 1.6" (40mm)

FA-7221 2.75" (70mm)

Wall - 23.5" x 18.5" (595mm x 470mm)

FA-4222 1.6" (40mm)

FA-7222 2.75" (70mm)



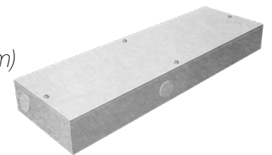
FA-4220 shown
Custom sizes and cut-outs available

Junction Box

11.75" x 3.5" (300mm x 90mm)

FA-0420 1.1" (25mm)

FA-0720 2.25" (57mm)



FA-0420 shown

Cable Sleeve

4.5" x 3" (115mm x 75mm)

Low Profile

FA-0410 1.3" (35mm)

FA-0710 2.5" (65mm)



FA-0710 shown

Gridd[®] POWER Modular Wiring System

Pre-wired 50A modular bus and distribution system with preconfigured plug-and-play components make installation effortless and are easily reconfigured. Each track can deliver up to 18,000 watts of power with current-monitoring and real-time data. This modular system includes floor boxes; desk mounts; circuit breaker boxes to power system furniture and/or wall receptacles; and relays for energy control. Recyclable, removable, and reusable.

Accessories

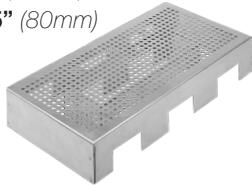
—Final touches.

Air Vent

20" x 10" (500mm x 250mm)

FA-4210 1.9" (50mm)

FA-7210 3.15" (80mm)



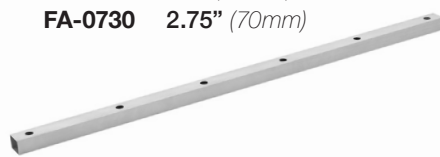
Custom sizes available

Aluminum Curb

96" x 3.5" (2440mm x 90mm)

FA-0430 1.6" (40mm)

FA-0730 2.75" (70mm)



Aluminum Curb Corner

36" x 36" x 3.5" (914mm x 914mm x 90mm)

FA-0431 1.6" (40mm)

FA-0731 2.75" (70mm)



Pre-cut components

—Access through grommets and floor boxes.

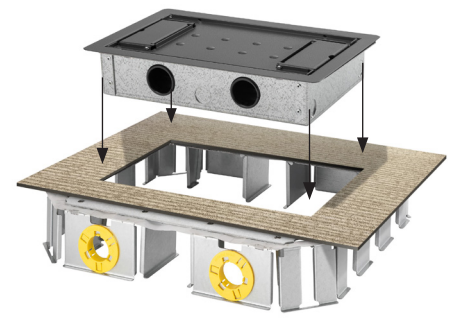
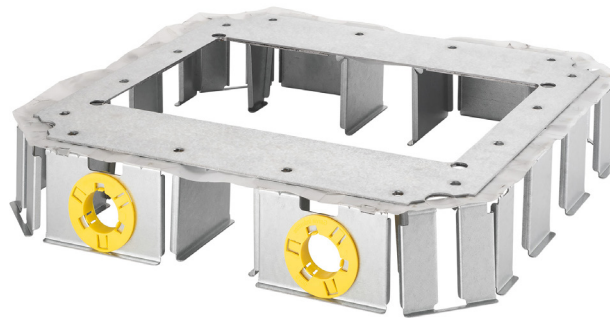
Base Unit Cutout

14.6" x 14.6" (370mm x 370mm)

Bushing for
low-voltage transition

FA-4630K 1.6" (40mm)

FA-7630K 2.75" (70mm)



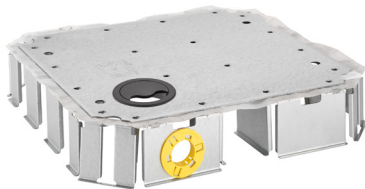
Custom cuts available

Base Unit w/Grommet

14.6" x 14.6" (370mm x 370mm)

FA-4600K 1.6" (40mm)

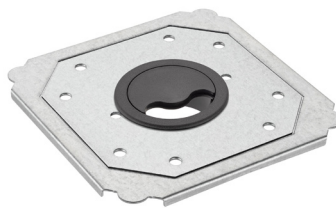
FA-7600K 2.75" (70mm)



Corner Plate w/Grommet

7.8" x 7.8" (198mm x 198mm)

FA-4214m3 (Universal)



Channel Plate w/Grommet

11.7" x 5" (298mm x 127mm)

FA-4215m3 (Universal)

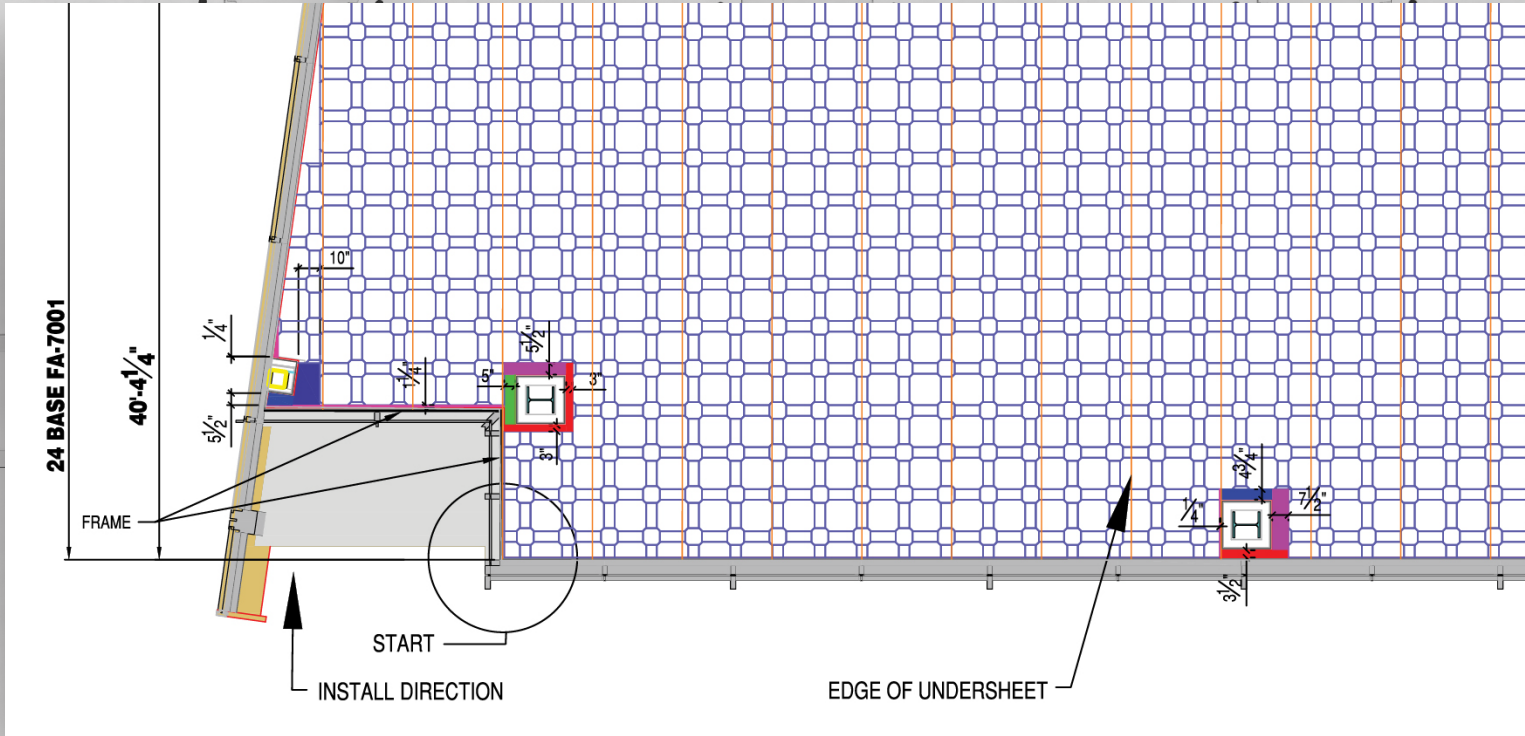


Additional grommets available










Installation Drawings Standard

-Design assist for every installation. Detailed and precise.



BORDER COMPONENT CONDITIONS

Option	End Part	Gap	Parts
	1/2 or Full Base	1/2" - 2"	E
	1/2 or Full Base	>2" - 4 1/2"	E+R
	1/2 Base	>4" - 6 1/2"	E+R+L
	Full Base	>4 1/2" - 5 3/4"	E+L
	Full Base	>5 3/4" - 8 1/2"	E+R+L
	Full Base	>8 1/2" - 10 1/2"	E+(2)L
	Full Base	>10 1/2" - 12"	E+R+(2)L

L=L Type Border, E=End Cover, R=Reinforcing Band

Just three intelligent border components will fill 1/2" - 12" gap. Curved or angled walls.

